

Washington State Department of Fish and Wildlife
Priority Habitat and Species Report
For Andy Schmidt Proposed Planned Unit Development

The following information contains a draft report of the proposed planned unit development property from the Washington State Department of Fish and Wildlife's Priority Habitat and Species online mapping tool. This tool recognizes habitats and species that are threatened, endangered, and/or need to be protected. Priority Species include State Endangered, Threatened, Sensitive, and Candidate species, as well as vulnerable animal groups and species of recreational, commercial, or tribal importance. Priority Habitats consist of unique vegetation types (e.g., shrubsteppe), dominant plant species (like juniper savannah), or specific habitat features (such as cliffs).

As can be identified in this report, the property for proposed development contains no priority species. The identified priority habitats include the freshwater emergent wetland, shrubsteppe, freshwater forested/ shrub wetland, and riverine.

Taken directly from the Washington State Priority Habitat and Species List are the definitions for these identified habitats:

Wetlands (Including freshwater emergent and freshwater forested/shrub types): Lands transitional between terrestrial and aquatic systems where the water table is usually at or near the surface or the land is covered by shallow water. Wetlands must have one or more of the following attributes: the land supports, at least periodically, predominantly hydrophytic plants; substrate is predominantly undrained hydric soils; and/or the substrate is nonsoil and is saturated with water or covered by shallow water at some time during the growing season of each year.

Shrubsteppe: A nonforested vegetation type consisting of one or more layers of perennial bunchgrasses and a conspicuous but discontinuous layer of shrub. Shrubsteppe contains various habitat features, including diverse topography, riparian areas, and canyons. Another important component is habitat quality (i.e., degree to which a tract resembles a site potential natural community), which may be influenced by soil condition and erosion; and the distribution, coverage, and vigor of native shrubs, forbs, and grasses.

Riparian (riverine): The area adjacent to flowing or standing freshwater aquatic systems. Riparian habitat encompasses the area beginning at the ordinary high water mark and extends to that portion of the terrestrial landscape that is influenced by, or that directly influences, the aquatic ecosystem. In riparian systems, the vegetation, water tables, soils, microclimate, and wildlife inhabitants of terrestrial ecosystems are often influenced by perennial or intermittent water. Simultaneously, adjacent vegetation, nutrient and sediment loading, terrestrial wildlife, as well as organic and inorganic debris influence the biological and physical properties of the aquatic ecosystem. Riparian habitat includes the entire extent of the floodplain and riparian areas of wetlands that are directly connected to stream courses or other freshwater.

A full report of all identified critical areas can be found in the Critical Areas Report completed by Ed Sewall.



User Comments/Notes:

PHS Species/Habitats Overview:

Occurrence Name	Federal Status	State Status	Sensitive Location
Freshwater Emergent Wetland	N/A	N/A	No
Shrubsteppe	N/A	N/A	No

PHS Species/Habitats Details:

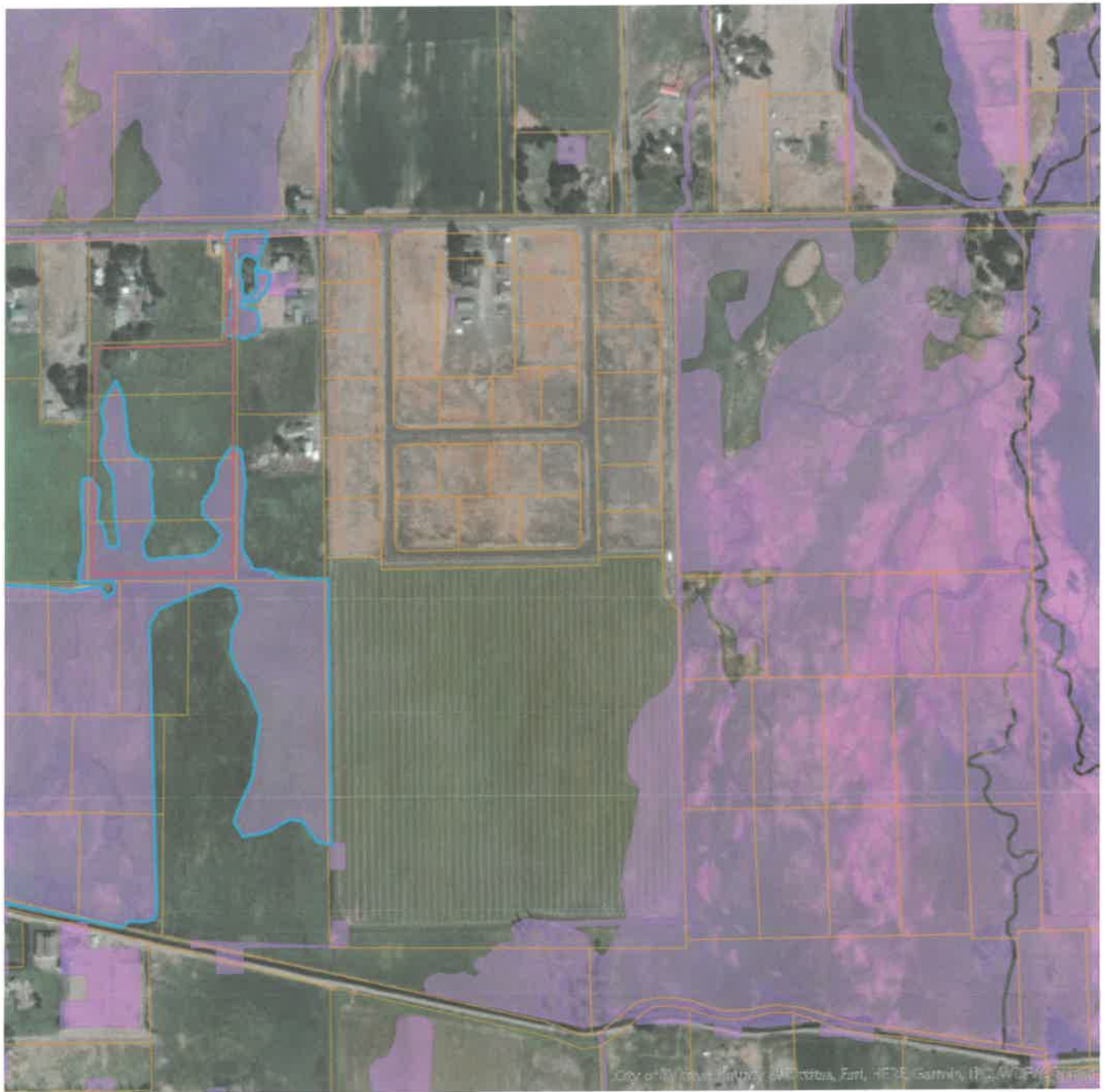
Freshwater Emergent Wetland	
Priority Area	Aquatic Habitat
Site Name	N/A
Accuracy	NA
Notes	Wetland System: Freshwater Emergent Wetland - NWI Code: PEM1C
Source Dataset	NWIIWetlands
Source Name	Not Given
Source Entity	US Fish and Wildlife Service
Federal Status	N/A
State Status	N/A
PHS Listing Status	PHS Listed Occurrence
Sensitive	N
SGCN	N
Display Resolution	AS MAPPED
ManagementRecommendations	http://www.ecy.wa.gov/programs/sea/wetlands/bas/index.html
Geometry Type	Polygons

Shrubsteppe	
Priority Area	Habitat Feature
Site Name	Kittitas County Presumptive Shrubsteppe
Accuracy	NA
Notes	General location of Shrubsteppe. Confirm or refute with site-scale info. WDFW recommends using site-scale info to inform site-scale land use decisions. Expect that on-the-ground conditions (e.g., boundaries) will vary from the map.
Source Record	920870
Source Name	Keith Folkerts, WDFW
Source Entity	WA Dept. of Fish and Wildlife
Federal Status	N/A
State Status	N/A
PHS Listing Status	PHS LISTED OCCURRENCE
Sensitive	N
SGCN	N
Display Resolution	AS MAPPED
Geometry Type	Polygons

DISCLAIMER. This report includes information that the Washington Department of Fish and Wildlife (WDFW) maintains in a central computer database. It is not an attempt to provide you with an official agency response as to the impacts of your project on fish and wildlife. This information only documents the location of fish and wildlife resources to the best of our knowledge. It is not a complete inventory and it is important to note that fish and wildlife resources may occur in areas not currently known to WDFW biologists, or in areas for which comprehensive surveys have not been conducted. Site specific surveys are frequently necessary to rule out the presence of priority resources. Locations of fish and wildlife resources are subject to variation caused by disturbance, changes in season and weather, and other factors. WDFW does not recommend using reports more than six months old.



Priority Habitats and Species on the Web



Report Date: 06/10/2024

User Comments/Notes:

PHS Species/Habitats Overview:

Occurrence Name	Federal Status	State Status	Sensitive Location
Freshwater Emergent Wetland	N/A	N/A	No

PHS Species/Habitats Details:

Freshwater Emergent Wetland	
Priority Area	Aquatic Habitat
Site Name	N/A
Accuracy	NA
Notes	Wetland System: Freshwater Emergent Wetland - NWI Code: PEM1C
Source Dataset	NWIWetlands
Source Name	Not Given
Source Entity	US Fish and Wildlife Service
Federal Status	N/A
State Status	N/A
PHS Listing Status	PHS Listed Occurrence
Sensitive	N
SGCN	N
Display Resolution	AS MAPPED
ManagementRecommendations	http://www.ecy.wa.gov/programs/sea/wetlands/bas/index.html
Geometry Type	Polygons

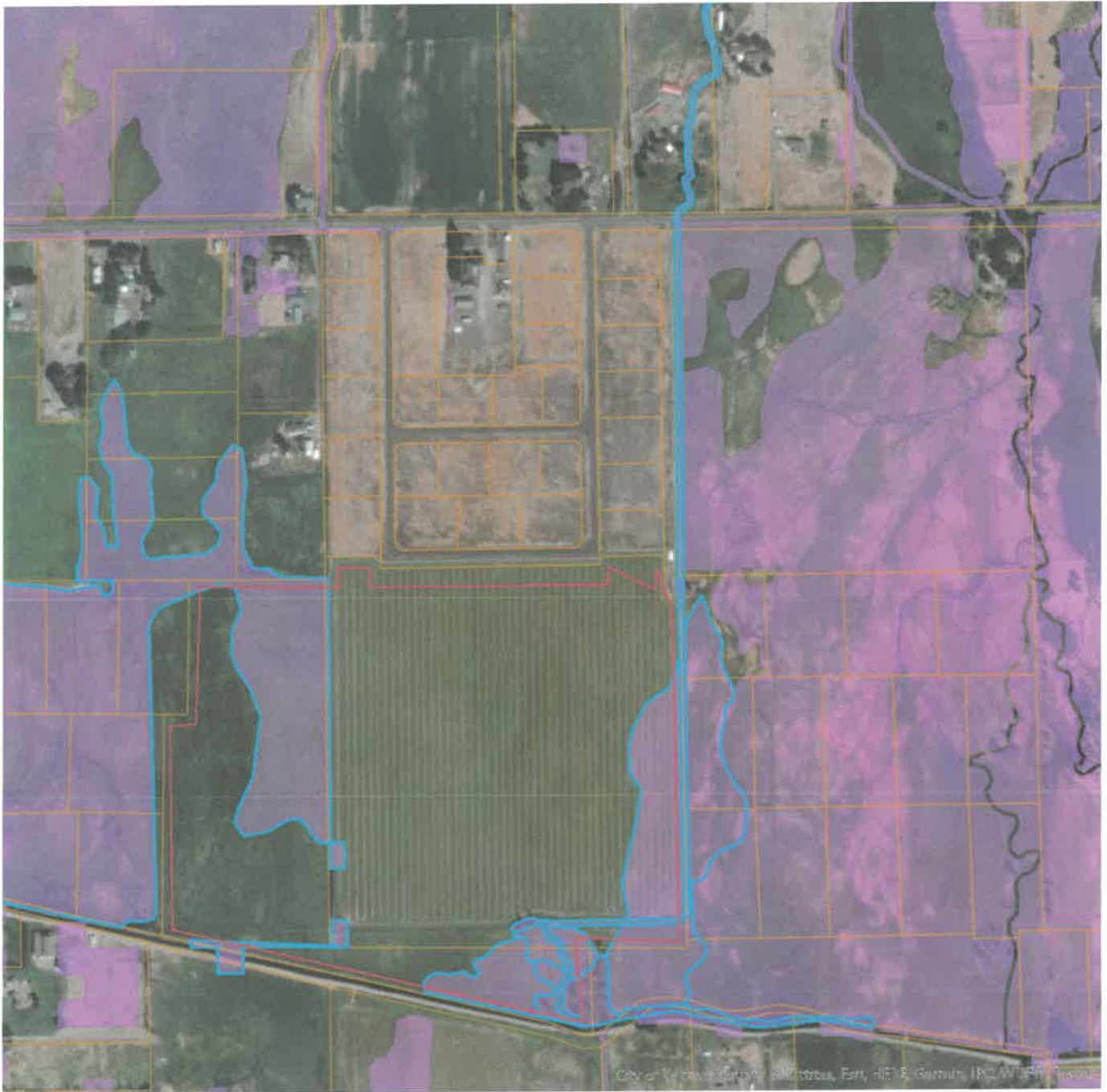
Freshwater Emergent Wetland	
Priority Area	Aquatic Habitat
Site Name	N/A
Accuracy	NA
Notes	Wetland System: Freshwater Emergent Wetland - NWI Code: PEM1F
Source Dataset	NWIWetlands
Source Name	Not Given
Source Entity	US Fish and Wildlife Service
Federal Status	N/A
State Status	N/A
PHS Listing Status	PHS Listed Occurrence
Sensitive	N
SGCN	N
Display Resolution	AS MAPPED
ManagementRecommendations	http://www.ecy.wa.gov/programs/sea/wetlands/bas/index.html
Geometry Type	Polygons

DISCLAIMER. This report includes information that the Washington Department of Fish and Wildlife (WDFW) maintains in a central computer database. It is not an attempt to provide you with an official agency response as to the impacts of your project on fish and wildlife. This information only documents the location of fish and wildlife resources to the best of our knowledge. It is not a complete inventory and it is important to note that fish and wildlife resources may occur in areas not currently known to WDFW biologists, or in areas for which comprehensive

surveys have not been conducted. Site specific surveys are frequently necessary to rule out the presence of priority resources. Locations of fish and wildlife resources are subject to variation caused by disturbance, changes in season and weather, and other factors. WDFW does not recommend using reports more than six months old.



Priority Habitats and Species on the Web



Report Date: 06/10/2024

User Comments/Notes:

PHS Species/Habitats Overview:

Occurrence Name	Federal Status	State Status	Sensitive Location
Freshwater Emergent Wetland	N/A	N/A	No
Freshwater Forested/Shrub Wetland	N/A	N/A	No
Riverine	N/A	N/A	No
Shrubsteppe	N/A	N/A	No

PHS Species/Habitats Details:

Freshwater Emergent Wetland	
Priority Area	Aquatic Habitat
Site Name	N/A
Accuracy	NA
Notes	Wetland System: Freshwater Emergent Wetland - NWI Code: PEM1A
Source Dataset	NWIIWetlands
Source Name	Not Given
Source Entity	US Fish and Wildlife Service
Federal Status	N/A
State Status	N/A
PHS Listing Status	PHS Listed Occurrence
Sensitive	N
SGCN	N
Display Resolution	AS MAPPED
ManagementRecommendations	http://www.ecy.wa.gov/programs/sea/wetlands/bas/index.html
Geometry Type	Polygons

Freshwater Emergent Wetland	
Priority Area	Aquatic Habitat
Site Name	N/A
Accuracy	NA
Notes	Wetland System: Freshwater Emergent Wetland - NWI Code: PEM1A
Source Dataset	NWIIWetlands
Source Name	Not Given
Source Entity	US Fish and Wildlife Service
Federal Status	N/A
State Status	N/A
PHS Listing Status	PHS Listed Occurrence
Sensitive	N
SGCN	N
Display Resolution	AS MAPPED
ManagementRecommendations	http://www.ecy.wa.gov/programs/sea/wetlands/bas/index.html
Geometry Type	Polygons

Freshwater Emergent Wetland	
Priority Area	Aquatic Habitat
Site Name	N/A
Accuracy	NA
Notes	Wetland System: Freshwater Emergent Wetland - NWI Code: PEM1C
Source Dataset	NWIIWetlands
Source Name	Not Given
Source Entity	US Fish and Wildlife Service
Federal Status	N/A
State Status	N/A
PHS Listing Status	PHS Listed Occurrence
Sensitive	N
SGCN	N
Display Resolution	AS MAPPED
ManagementRecommendations	http://www.ecy.wa.gov/programs/sea/wetlands/bas/index.html
Geometry Type	Polygons

Freshwater Emergent Wetland	
Priority Area	Aquatic Habitat
Site Name	N/A
Accuracy	NA
Notes	Wetland System: Freshwater Emergent Wetland - NWI Code: PEM1C
Source Dataset	NWIIWetlands
Source Name	Not Given
Source Entity	US Fish and Wildlife Service
Federal Status	N/A
State Status	N/A
PHS Listing Status	PHS Listed Occurrence
Sensitive	N
SGCN	N
Display Resolution	AS MAPPED
ManagementRecommendations	http://www.ecy.wa.gov/programs/sea/wetlands/bas/index.html
Geometry Type	Polygons

Freshwater Forested/Shrub Wetland	
Priority Area	Aquatic Habitat
Site Name	N/A
Accuracy	NA
Notes	Wetland System: Freshwater Forested/Shrub Wetland - NWI Code: PSS1A
Source Dataset	NWIIWetlands
Source Name	Not Given
Source Entity	US Fish and Wildlife Service
Federal Status	N/A
State Status	N/A
PHS Listing Status	PHS Listed Occurrence
Sensitive	N
SGCN	N
Display Resolution	AS MAPPED
ManagementRecommendations	http://www.ecy.wa.gov/programs/sea/wetlands/bas/index.html
Geometry Type	Polygons

Freshwater Forested/Shrub Wetland	
Priority Area	Aquatic Habitat
Site Name	N/A
Accuracy	NA
Notes	Wetland System: Freshwater Forested/Shrub Wetland - NWI Code: PSS1A
Source Dataset	NWIIWetlands
Source Name	Not Given
Source Entity	US Fish and Wildlife Service
Federal Status	N/A
State Status	N/A
PHS Listing Status	PHS Listed Occurrence
Sensitive	N
SGCN	N
Display Resolution	AS MAPPED
ManagementRecommendations	http://www.ecy.wa.gov/programs/sea/wetlands/bas/index.html
Geometry Type	Polygons

Freshwater Forested/Shrub Wetland	
Priority Area	Aquatic Habitat
Site Name	N/A
Accuracy	NA
Notes	Wetland System: Freshwater Forested/Shrub Wetland - NWI Code: PSS1C
Source Dataset	NWIIWetlands
Source Name	Not Given
Source Entity	US Fish and Wildlife Service
Federal Status	N/A
State Status	N/A
PHS Listing Status	PHS Listed Occurrence
Sensitive	N
SGCN	N
Display Resolution	AS MAPPED
ManagementRecommendations	http://www.ecy.wa.gov/programs/sea/wetlands/bas/index.html
Geometry Type	Polygons

Freshwater Forested/Shrub Wetland	
Priority Area	Aquatic Habitat
Site Name	N/A
Accuracy	NA
Notes	Wetland System: Freshwater Forested/Shrub Wetland - NWI Code: PSS1C
Source Dataset	NWIWetlands
Source Name	Not Given
Source Entity	US Fish and Wildlife Service
Federal Status	N/A
State Status	N/A
PHS Listing Status	PHS Listed Occurrence
Sensitive	N
SGCN	N
Display Resolution	AS MAPPED
ManagementRecommendations	http://www.ecy.wa.gov/programs/sea/wetlands/bas/index.html
Geometry Type	Polygons

Freshwater Forested/Shrub Wetland	
Priority Area	Aquatic Habitat
Site Name	N/A
Accuracy	NA
Notes	Wetland System: Freshwater Forested/Shrub Wetland - NWI Code: PFO1C
Source Dataset	NWIWetlands
Source Name	Not Given
Source Entity	US Fish and Wildlife Service
Federal Status	N/A
State Status	N/A
PHS Listing Status	PHS Listed Occurrence
Sensitive	N
SGCN	N
Display Resolution	AS MAPPED
ManagementRecommendations	http://www.ecy.wa.gov/programs/sea/wetlands/bas/index.html
Geometry Type	Polygons

Riverine	
Priority Area	Aquatic Habitat
Site Name	N/A
Accuracy	NA
Notes	Wetland System: Riverine - NWI Code: R4SBCx
Source Dataset	NWIWetlands
Source Name	Not Given
Source Entity	US Fish and Wildlife Service
Federal Status	N/A
State Status	N/A
PHS Listing Status	PHS Listed Occurrence
Sensitive	N
SGCN	N
Display Resolution	AS MAPPED
ManagementRecommendations	http://www.ecy.wa.gov/programs/sea/wetlands/bas/index.html
Geometry Type	Polygons

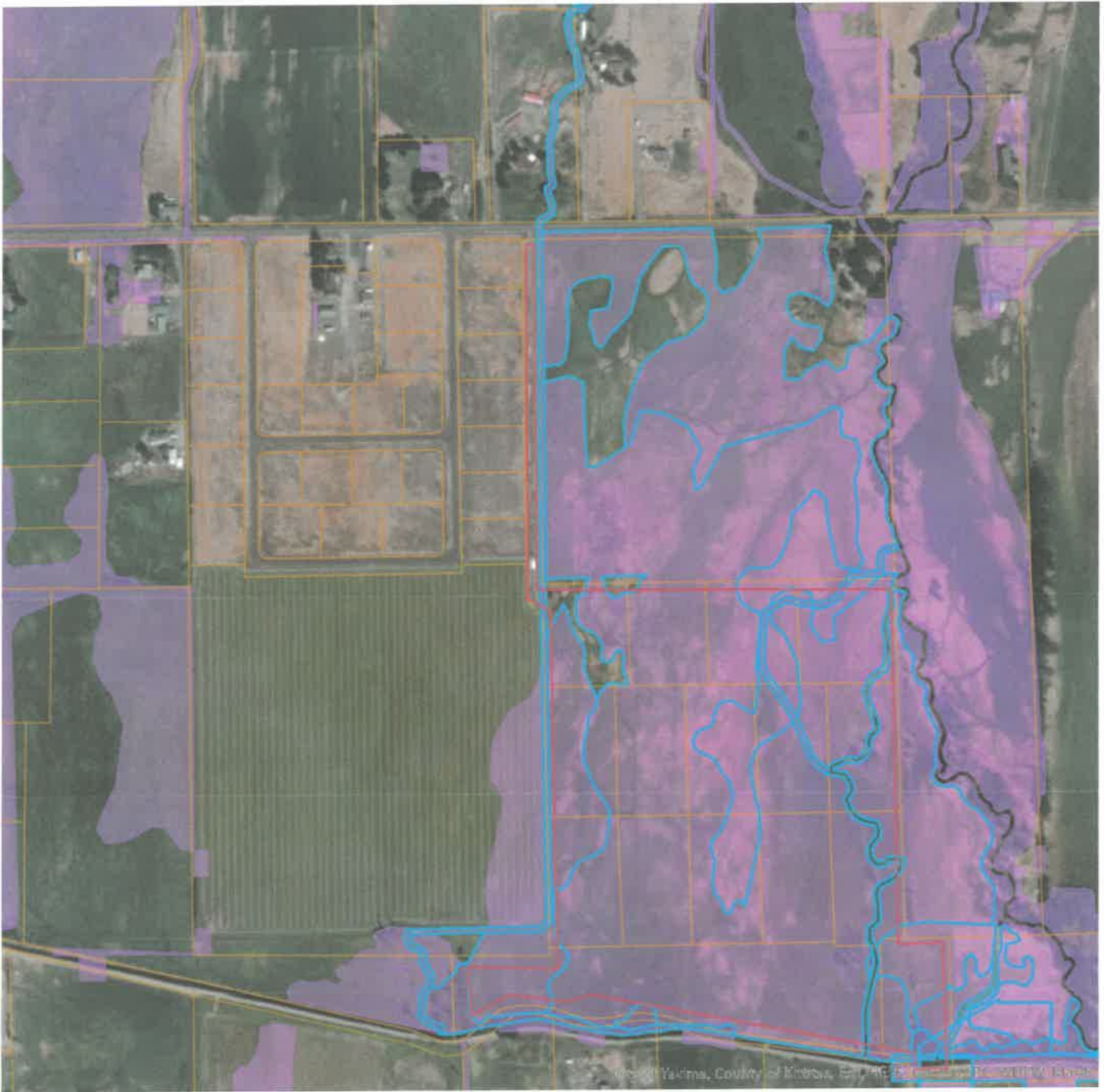
Shrubsteppe	
Priority Area	Habitat Feature
Site Name	Kittitas County Presumptive Shrubsteppe
Accuracy	NA
Notes	General location of Shrubsteppe. Confirm or refute with site-scale info. WDFW recommends using site-scale info to inform site-scale land use decisions. Expect that on-the-ground conditions (e.g., boundaries) will vary from the map.
Source Record	920870
Source Name	Keith Folkerts, WDFW
Source Entity	WA Dept. of Fish and Wildlife
Federal Status	N/A
State Status	N/A
PHS Listing Status	PHS LISTED OCCURRENCE
Sensitive	N
SGCN	N
Display Resolution	AS MAPPED
Geometry Type	Polygons

Shrubsteppe	
Priority Area	Habitat Feature
Site Name	Kittitas County Presumptive Shrubsteppe
Accuracy	NA
Notes	General location of Shrubsteppe. Confirm or refute with site-scale info. WDFW recommends using site-scale info to inform site-scale land use decisions. Expect that on-the-ground conditions (e.g., boundaries) will vary from the map.
Source Record	920870
Source Name	Keith Folkerts, WDFW
Source Entity	WA Dept. of Fish and Wildlife
Federal Status	N/A
State Status	N/A
PHS Listing Status	PHS LISTED OCCURRENCE
Sensitive	N
SGCN	N
Display Resolution	AS MAPPED
Geometry Type	Polygons

DISCLAIMER. This report includes information that the Washington Department of Fish and Wildlife (WDFW) maintains in a central computer database. It is not an attempt to provide you with an official agency response as to the impacts of your project on fish and wildlife. This information only documents the location of fish and wildlife resources to the best of our knowledge. It is not a complete inventory and it is important to note that fish and wildlife resources may occur in areas not currently known to WDFW biologists, or in areas for which comprehensive surveys have not been conducted. Site specific surveys are frequently necessary to rule out the presence of priority resources. Locations of fish and wildlife resources are subject to variation caused by disturbance, changes in season and weather, and other factors. WDFW does not recommend using reports more than six months old.



Priority Habitats and Species on the Web



Report Date: 06/10/2024

User Comments/Notes:

PHS Species/Habitats Overview:

Occurrence Name	Federal Status	State Status	Sensitive Location
Freshwater Emergent Wetland	N/A	N/A	No
Freshwater Forested/Shrub Wetland	N/A	N/A	No
Riverine	N/A	N/A	No
Shrubsteppe	N/A	N/A	No

PHS Species/Habitats Details:

Freshwater Emergent Wetland	
Priority Area	Aquatic Habitat
Site Name	N/A
Accuracy	NA
Notes	Wetland System: Freshwater Emergent Wetland - NWI Code: PEM1A
Source Dataset	NWIWetlands
Source Name	Not Given
Source Entity	US Fish and Wildlife Service
Federal Status	N/A
State Status	N/A
PHS Listing Status	PHS Listed Occurrence
Sensitive	N
SGCN	N
Display Resolution	AS MAPPED
ManagementRecommendations	http://www.ecy.wa.gov/programs/sea/wetlands/bas/index.html
Geometry Type	Polygons

Freshwater Emergent Wetland	
Priority Area	Aquatic Habitat
Site Name	N/A
Accuracy	NA
Notes	Wetland System: Freshwater Emergent Wetland - NWI Code: PEM1A
Source Dataset	NWIWetlands
Source Name	Not Given
Source Entity	US Fish and Wildlife Service
Federal Status	N/A
State Status	N/A
PHS Listing Status	PHS Listed Occurrence
Sensitive	N
SGCN	N
Display Resolution	AS MAPPED
ManagementRecommendations	http://www.ecy.wa.gov/programs/sea/wetlands/bas/index.html
Geometry Type	Polygons

Freshwater Emergent Wetland	
Priority Area	Aquatic Habitat
Site Name	N/A
Accuracy	NA
Notes	Wetland System: Freshwater Emergent Wetland - NWI Code: PEM1A
Source Dataset	NWIWetlands
Source Name	Not Given
Source Entity	US Fish and Wildlife Service
Federal Status	N/A
State Status	N/A
PHS Listing Status	PHS Listed Occurrence
Sensitive	N
SGCN	N
Display Resolution	AS MAPPED
ManagementRecommendations	http://www.ecy.wa.gov/programs/sea/wetlands/bas/index.html
Geometry Type	Polygons

Freshwater Emergent Wetland	
Priority Area	Aquatic Habitat
Site Name	N/A
Accuracy	NA
Notes	Wetland System: Freshwater Emergent Wetland - NWI Code: PEM1A
Source Dataset	NWIIWetlands
Source Name	Not Given
Source Entity	US Fish and Wildlife Service
Federal Status	N/A
State Status	N/A
PHS Listing Status	PHS Listed Occurrence
Sensitive	N
SGCN	N
Display Resolution	AS MAPPED
ManagementRecommendations	http://www.ecy.wa.gov/programs/sea/wetlands/bas/index.html
Geometry Type	Polygons

Freshwater Emergent Wetland	
Priority Area	Aquatic Habitat
Site Name	N/A
Accuracy	NA
Notes	Wetland System: Freshwater Emergent Wetland - NWI Code: PEM1A
Source Dataset	NWIIWetlands
Source Name	Not Given
Source Entity	US Fish and Wildlife Service
Federal Status	N/A
State Status	N/A
PHS Listing Status	PHS Listed Occurrence
Sensitive	N
SGCN	N
Display Resolution	AS MAPPED
ManagementRecommendations	http://www.ecy.wa.gov/programs/sea/wetlands/bas/index.html
Geometry Type	Polygons

Freshwater Emergent Wetland	
Priority Area	Aquatic Habitat
Site Name	N/A
Accuracy	NA
Notes	Wetland System: Freshwater Emergent Wetland - NWI Code: PEM1A
Source Dataset	NWIIWetlands
Source Name	Not Given
Source Entity	US Fish and Wildlife Service
Federal Status	N/A
State Status	N/A
PHS Listing Status	PHS Listed Occurrence
Sensitive	N
SGCN	N
Display Resolution	AS MAPPED
ManagementRecommendations	http://www.ecy.wa.gov/programs/sea/wetlands/bas/index.html
Geometry Type	Polygons

Freshwater Emergent Wetland	
Priority Area	Aquatic Habitat
Site Name	N/A
Accuracy	NA
Notes	Wetland System: Freshwater Emergent Wetland - NWI Code: PEM1C
Source Dataset	NWIIWetlands
Source Name	Not Given
Source Entity	US Fish and Wildlife Service
Federal Status	N/A
State Status	N/A
PHS Listing Status	PHS Listed Occurrence
Sensitive	N
SGCN	N
Display Resolution	AS MAPPED
ManagementRecommendations	http://www.ecy.wa.gov/programs/sea/wetlands/bas/index.html
Geometry Type	Polygons

Freshwater Emergent Wetland	
Priority Area	Aquatic Habitat
Site Name	N/A
Accuracy	NA
Notes	Wetland System: Freshwater Emergent Wetland - NWI Code: PEM1C
Source Dataset	NWIIWetlands
Source Name	Not Given
Source Entity	US Fish and Wildlife Service
Federal Status	N/A
State Status	N/A
PHS Listing Status	PHS Listed Occurrence
Sensitive	N
SGCN	N
Display Resolution	AS MAPPED
ManagementRecommendations	http://www.ecy.wa.gov/programs/sea/wetlands/bas/index.html
Geometry Type	Polygons

Freshwater Emergent Wetland	
Priority Area	Aquatic Habitat
Site Name	N/A
Accuracy	NA
Notes	Wetland System: Freshwater Emergent Wetland - NWI Code: PEM1C
Source Dataset	NWIIWetlands
Source Name	Not Given
Source Entity	US Fish and Wildlife Service
Federal Status	N/A
State Status	N/A
PHS Listing Status	PHS Listed Occurrence
Sensitive	N
SGCN	N
Display Resolution	AS MAPPED
ManagementRecommendations	http://www.ecy.wa.gov/programs/sea/wetlands/bas/index.html
Geometry Type	Polygons

Freshwater Emergent Wetland	
Priority Area	Aquatic Habitat
Site Name	N/A
Accuracy	NA
Notes	Wetland System: Freshwater Emergent Wetland - NWI Code: PEM1C
Source Dataset	NWIIWetlands
Source Name	Not Given
Source Entity	US Fish and Wildlife Service
Federal Status	N/A
State Status	N/A
PHS Listing Status	PHS Listed Occurrence
Sensitive	N
SGCN	N
Display Resolution	AS MAPPED
ManagementRecommendations	http://www.ecy.wa.gov/programs/sea/wetlands/bas/index.html
Geometry Type	Polygons

Freshwater Emergent Wetland	
Priority Area	Aquatic Habitat
Site Name	N/A
Accuracy	NA
Notes	Wetland System: Freshwater Emergent Wetland - NWI Code: PEM1C
Source Dataset	NWIIWetlands
Source Name	Not Given
Source Entity	US Fish and Wildlife Service
Federal Status	N/A
State Status	N/A
PHS Listing Status	PHS Listed Occurrence
Sensitive	N
SGCN	N
Display Resolution	AS MAPPED
ManagementRecommendations	http://www.ecy.wa.gov/programs/sea/wetlands/bas/index.html
Geometry Type	Polygons

Freshwater Emergent Wetland	
Priority Area	Aquatic Habitat
Site Name	N/A
Accuracy	NA
Notes	Wetland System: Freshwater Emergent Wetland - NWI Code: PEM1C
Source Dataset	NWIIWetlands
Source Name	Not Given
Source Entity	US Fish and Wildlife Service
Federal Status	N/A
State Status	N/A
PHS Listing Status	PHS Listed Occurrence
Sensitive	N
SGCN	N
Display Resolution	AS MAPPED
ManagementRecommendations	http://www.ecy.wa.gov/programs/sea/wetlands/bas/index.html
Geometry Type	Polygons

Freshwater Emergent Wetland	
Priority Area	Aquatic Habitat
Site Name	N/A
Accuracy	NA
Notes	Wetland System: Freshwater Emergent Wetland - NWI Code: PEM1F
Source Dataset	NWIIWetlands
Source Name	Not Given
Source Entity	US Fish and Wildlife Service
Federal Status	N/A
State Status	N/A
PHS Listing Status	PHS Listed Occurrence
Sensitive	N
SGCN	N
Display Resolution	AS MAPPED
ManagementRecommendations	http://www.ecy.wa.gov/programs/sea/wetlands/bas/index.html
Geometry Type	Polygons

Freshwater Forested/Shrub Wetland	
Priority Area	Aquatic Habitat
Site Name	N/A
Accuracy	NA
Notes	Wetland System: Freshwater Forested/Shrub Wetland - NWI Code: PFO1C
Source Dataset	NWIIWetlands
Source Name	Not Given
Source Entity	US Fish and Wildlife Service
Federal Status	N/A
State Status	N/A
PHS Listing Status	PHS Listed Occurrence
Sensitive	N
SGCN	N
Display Resolution	AS MAPPED
ManagementRecommendations	http://www.ecy.wa.gov/programs/sea/wetlands/bas/index.html
Geometry Type	Polygons

Freshwater Forested/Shrub Wetland	
Priority Area	Aquatic Habitat
Site Name	N/A
Accuracy	NA
Notes	Wetland System: Freshwater Forested/Shrub Wetland - NWI Code: PSS1C
Source Dataset	NWIIWetlands
Source Name	Not Given
Source Entity	US Fish and Wildlife Service
Federal Status	N/A
State Status	N/A
PHS Listing Status	PHS Listed Occurrence
Sensitive	N
SGCN	N
Display Resolution	AS MAPPED
ManagementRecommendations	http://www.ecy.wa.gov/programs/sea/wetlands/bas/index.html
Geometry Type	Polygons

Freshwater Forested/Shrub Wetland

Priority Area	Aquatic Habitat
Site Name	N/A
Accuracy	NA
Notes	Wetland System: Freshwater Forested/Shrub Wetland - NWI Code: PSS1C
Source Dataset	NWIIWetlands
Source Name	Not Given
Source Entity	US Fish and Wildlife Service
Federal Status	N/A
State Status	N/A
PHS Listing Status	PHS Listed Occurrence
Sensitive	N
SGCN	N
Display Resolution	AS MAPPED
ManagementRecommendations	http://www.ecy.wa.gov/programs/sea/wetlands/bas/index.html
Geometry Type	Polygons

Riverine

Priority Area	Aquatic Habitat
Site Name	N/A
Accuracy	NA
Notes	Wetland System: Riverine - NWI Code: R4SBCx
Source Dataset	NWIIWetlands
Source Name	Not Given
Source Entity	US Fish and Wildlife Service
Federal Status	N/A
State Status	N/A
PHS Listing Status	PHS Listed Occurrence
Sensitive	N
SGCN	N
Display Resolution	AS MAPPED
ManagementRecommendations	http://www.ecy.wa.gov/programs/sea/wetlands/bas/index.html
Geometry Type	Polygons

Riverine	
Priority Area	Aquatic Habitat
Site Name	N/A
Accuracy	NA
Notes	Wetland System: Riverine - NWI Code: R4SBCx
Source Dataset	NWIIWetlands
Source Name	Not Given
Source Entity	US Fish and Wildlife Service
Federal Status	N/A
State Status	N/A
PHS Listing Status	PHS Listed Occurrence
Sensitive	N
SGCN	N
Display Resolution	AS MAPPED
ManagementRecommendations	http://www.ecy.wa.gov/programs/sea/wetlands/bas/index.html
Geometry Type	Polygons

Freshwater Emergent Wetland	
Priority Area	Aquatic Habitat
Site Name	N/A
Accuracy	NA
Notes	Wetland System: Freshwater Emergent Wetland - NWI Code: PEM1C
Source Dataset	NWIIWetlands
Source Name	Not Given
Source Entity	US Fish and Wildlife Service
Federal Status	N/A
State Status	N/A
PHS Listing Status	PHS Listed Occurrence
Sensitive	N
SGCN	N
Display Resolution	AS MAPPED
ManagementRecommendations	http://www.ecy.wa.gov/programs/sea/wetlands/bas/index.html
Geometry Type	Polygons

Shrubsteppe	
Priority Area	Habitat Feature
Site Name	Kittitas County Presumptive Shrubsteppe
Accuracy	NA
Notes	General location of Shrubsteppe. Confirm or refute with site-scale info. WDFW recommends using site-scale info to inform site-scale land use decisions. Expect that on-the-ground conditions (e.g., boundaries) will vary from the map.
Source Record	920870
Source Name	Keith Folkerts, WDFW
Source Entity	WA Dept. of Fish and Wildlife
Federal Status	N/A
State Status	N/A
PHS Listing Status	PHS LISTED OCCURRENCE
Sensitive	N
SGCN	N
Display Resolution	AS MAPPED
Geometry Type	Polygons

Shrubsteppe	
Priority Area	Habitat Feature
Site Name	Kittitas County Presumptive Shrubsteppe
Accuracy	NA
Notes	General location of Shrubsteppe. Confirm or refute with site-scale info. WDFW recommends using site-scale info to inform site-scale land use decisions. Expect that on-the-ground conditions (e.g., boundaries) will vary from the map.
Source Record	920870
Source Name	Keith Folkerts, WDFW
Source Entity	WA Dept. of Fish and Wildlife
Federal Status	N/A
State Status	N/A
PHS Listing Status	PHS LISTED OCCURRENCE
Sensitive	N
SGCN	N
Display Resolution	AS MAPPED
Geometry Type	Polygons

DISCLAIMER. This report includes information that the Washington Department of Fish and Wildlife (WDFW) maintains in a central computer database. It is not an attempt to provide you with an official agency response as to the impacts of your project on fish and wildlife. This information only documents the location of fish and wildlife resources to the best of our knowledge. It is not a complete inventory and it is important to note that fish and wildlife resources may occur in areas not currently known to WDFW biologists, or in areas for which comprehensive surveys have not been conducted. Site specific surveys are frequently necessary to rule out the presence of priority resources. Locations of fish and wildlife resources are subject to variation caused by disturbance, changes in season and weather, and other factors. WDFW does not recommend using reports more than six months old.

Washington State Department of Fish and Wildlife
Priority Habitat and Species Review
For Andy Schmidt Planned Unit Development

